

The background is a solid blue gradient. At the top, there are several concentric ovals in shades of blue and cyan. The name 'Roberto Beccaceci' is written in a bold, black, serif font across the middle of these ovals. A series of five parallel diagonal lines, starting from the right side of the top ovals and extending towards the bottom left, cross the entire page. At the bottom, the word 'FLORES' is written in a large, bold, black, serif font, with a small cyan oval behind it. Below 'FLORES' is the text 'Sinfonia per piccola orchestra' in a smaller, bold, black, serif font. At the very bottom, the word 'Timpani' is written in an italicized, black, serif font.

Roberto Beccaceci

FLORES

Sinfonia per piccola orchestra

Timpani

ABBREVIAZIONI E SEGNI CONVENZIONALI

- Fiati:

flt.: “flatterzunge”;

s.att.: senza far sentire l’attacco;



respiro breve,



respiro lungo.

- Timpani:

bordo: percussione il più vicino possibile al bordo;

centro: percussione al centro della pelle.

- Archi:

arco: con l’arco (esecuzione ordinaria),

legno: col legno,

punta: alla punta;

pont.: sul ponticello,

tast.: sulla tastiera,

N: posizione normale;

pizz.: pizzicato ordinario,



pizzicato “strappato”.

- Indicazioni comuni:

ord.: ordinario;

sord.: con sordina,

S.sord.: senza sordina;

SV: senza vibrare,

VL: vibrato lento,

VR: vibrato rapido;

, respiro normale - nei timpani e negli archi pizzicati indica lo smorzamento della vibrazione;



corona breve,



corona normale,



corona lunga;

i segni: >- - - - - , - - - - - > indicano il passaggio graduale da una particolare modalità esecutiva ad un’altra;

i segni:



indicano un comune

livello dinamico di tutti gli strumenti privi di indicazione propria.

AVVERTENZE

1. Le indicazioni di metronomo non devono essere intese rigidamente, ma solo come proposte che il Direttore è libero di variare - entro certi limiti - sulla base delle proprie esigenze espressive.
2. I segni di alterazione hanno valore - esclusivamente - nell’ambito della misura o del singolo pentagramma in cui si trovano.

Durata: 24’:30’’ - 25’ ca.

FLORES
Sinfonia per piccola orchestra

R. Beccaceci
(1998-'99)

- I -

Molto moderato; meditativo (N.B.) ♩ = 30 - 33 ca.

A

III: Sol2
II: Fa2
I: La1

6

Timpani



N.B.: "*Flores apparuerunt*" (Verso alleluiatico)

Timpani

Largo ♩ = 27 ca.

7

B

10

mazz.le medie feltro

Timp.

Musical staff for Timpani, measures 7-10. The staff is in bass clef with a 2/4 time signature. Measure 7 contains a whole rest. Measure 8 contains a whole note. Measures 9 and 10 contain eighth notes. Dynamics: *pppp* at the start, *p* at the end.

21

Timp.

Musical staff for Timpani, measures 21-27. The staff is in bass clef with a 2/4 time signature. Measures 21-27 contain eighth notes. Dynamics: *mp* at the start, *mf* at the end.


28

Timp.

Musical staff for Timpani, measures 28-30. The staff is in bass clef with a 2/4 time signature. Measures 28-29 contain eighth notes. Measure 30 contains a quarter note. Dynamics: *f* at the start, *fff* at the end. A *poco rit.* marking is present above the staff, followed by a dashed line and a comma. The time signature changes to 3/8 at the end of the staff.

- II -

Presto frenetico (tempo I)




 = 92 ca.

35

A I: Do2

6

Timp.



Timpani

41

B

7

Timp.

Timpani staff with a bass clef and a whole note chord marked 'B'.

Timpani

- 5 -


C *rit.* ----- *al*

16 3

Temp.

Lievemente mosso; inquieto ♩. = 44 ca.

68 **D** 12 **E** 8

Timp. 

88 mazz.le dure feltro **F** , ,

Timp.

pp *mp* *mf* *p*


94

Timp.

The musical score for the Timpani part consists of six measures. Each measure contains a single eighth note with a fermata, followed by a quarter rest. The notes are G2, F2, E2, D2, C2, and B1. The staff is a single line with a bass clef.

Timp.  **G** 100 *mp* *mf*

108 **H** 7

Temp. 

Timpani

115

I

7

acc. con estrema gradualità

Timp.

128

Timp.

Tempo I

134

J

II: Re2

I: La1

6

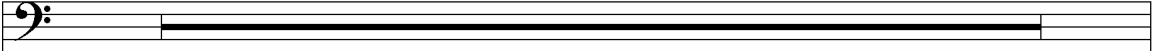
Timp.

140

K

6

Timp.



146


(mazz.le dure feltro)

L

III: Fa#2

16

Timp.



mf *sfz* Λ ,

Timpani

Senza precipitare, ma con grande energia

♩. = 42 ca.

M

163 mazz.le di legno

Timp. *sfz*

171

rit. molto gradualmente
senza allargare i tremoli!

178 N>----->centro

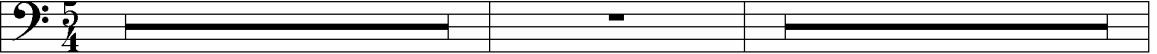
Timp. *p* *ppp*

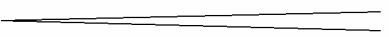
- III -

Andante calmo ♩ = 29 ca.


185 III: Sol#2 **A**

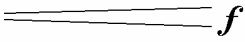
2 5

Timp. 


p 


193 mazz.le medie feltro

Timp. 

f  *ff* ma senza forzare!


197

Timp. 

f 

201 **B**

7 coperti con panno

Timp. 

pp

212 *rit. molto gradualmente* -----

Timp. 

ppp

♩ = ♩

216 N>----- >bordo

Timp. 

pppp

- IV -

Allegro vivace; vigoroso ♩ = 92 ca.

III: Sol \sharp 2
II: Do \sharp 2

219

A

44

Timp.

Timpani staff for section A, measures 219-243. The staff is in bass clef with a 2/4 time signature. A solid black line indicates a sustained drum roll across the entire section.

263

B

44

Timp.

Timpani staff for section B, measures 263-307. The staff is in bass clef. A solid black line indicates a sustained drum roll across the entire section.

307

C

44

Timp.

Timpani staff for section C, measures 307-351. The staff is in bass clef. A solid black line indicates a sustained drum roll across the entire section.

351

D

44

Timp.

Timpani staff for section D, measures 351-395. The staff is in bass clef. A solid black line indicates a sustained drum roll across the entire section.

E

ord.

mazz.le di legno

395

Timp.

mf sempre

404

Timp.

410

Timp.

417

Timp.

424

Timp.

f

433

Timp.

fff

- V -

Lento; con grande tenerezza (tempo I) ♩ = 20 ca.

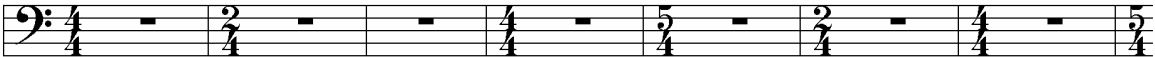
439

II: Re2

A

^

Timp.



446

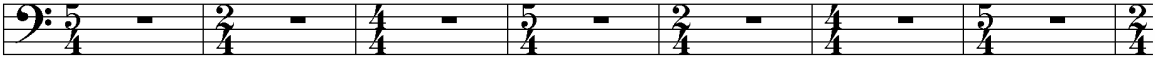
^

B

^

^

Timp.



453

^

C

^

Timp.



460

mazz.le morbide

^

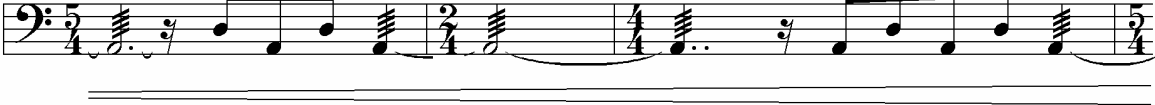
Timp.



464

^

Timp.



Molto moderato (come all'inizio)

$\text{♩} = 30 - 33 \text{ ca.}$

D

467

Timp.

mf

Tempo I

E

473

Timp.

ppp sempre

476

rit.

Timp.

ppp ∇ non troppo \triangleright *pppp*